

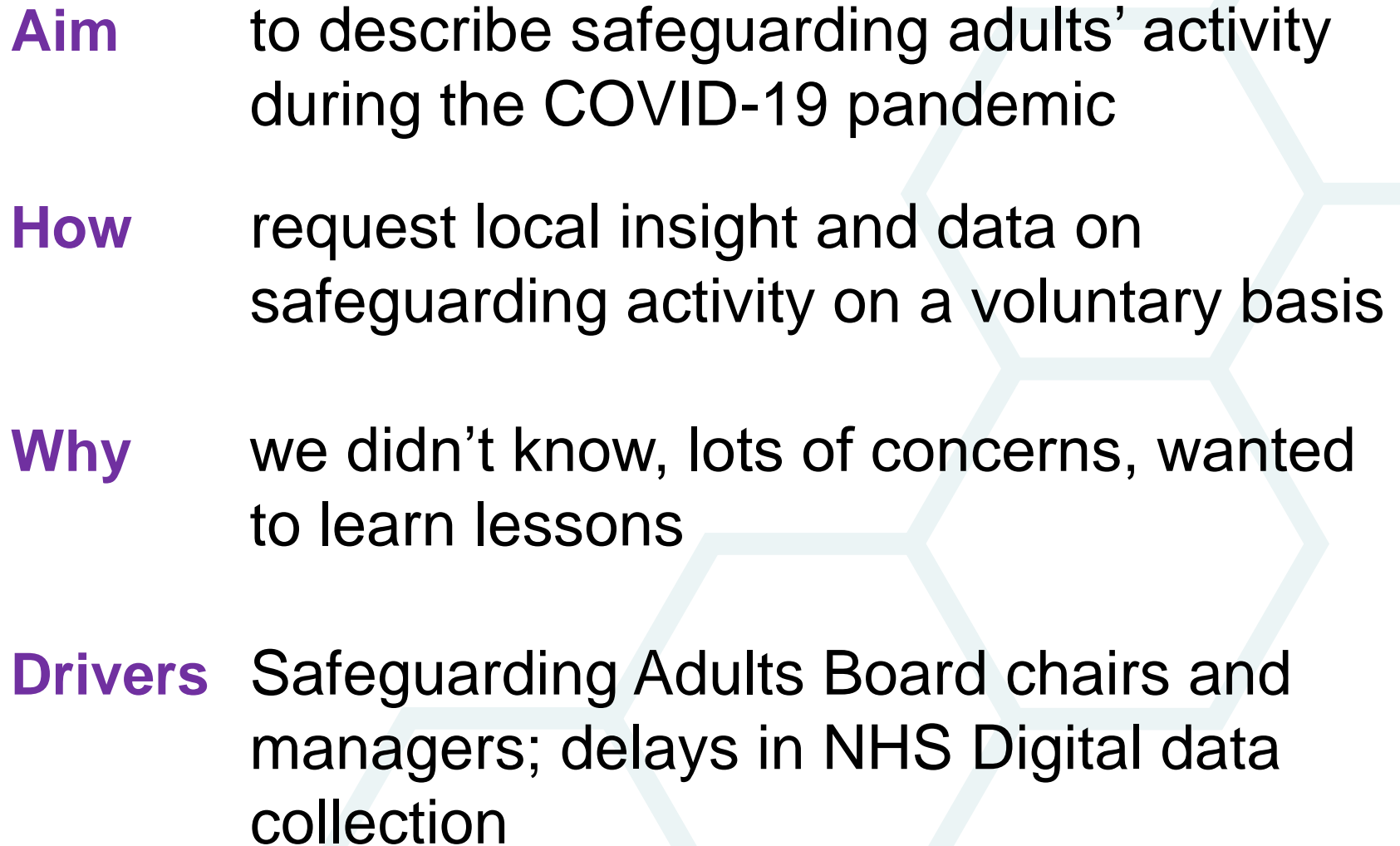
COVID-19 Adult Safeguarding Insight Project Briefing

Dr Adi Cooper OBE

(co-authors

Anusree Biswas Sasidharan
& James Harman)

19 Nov 2020

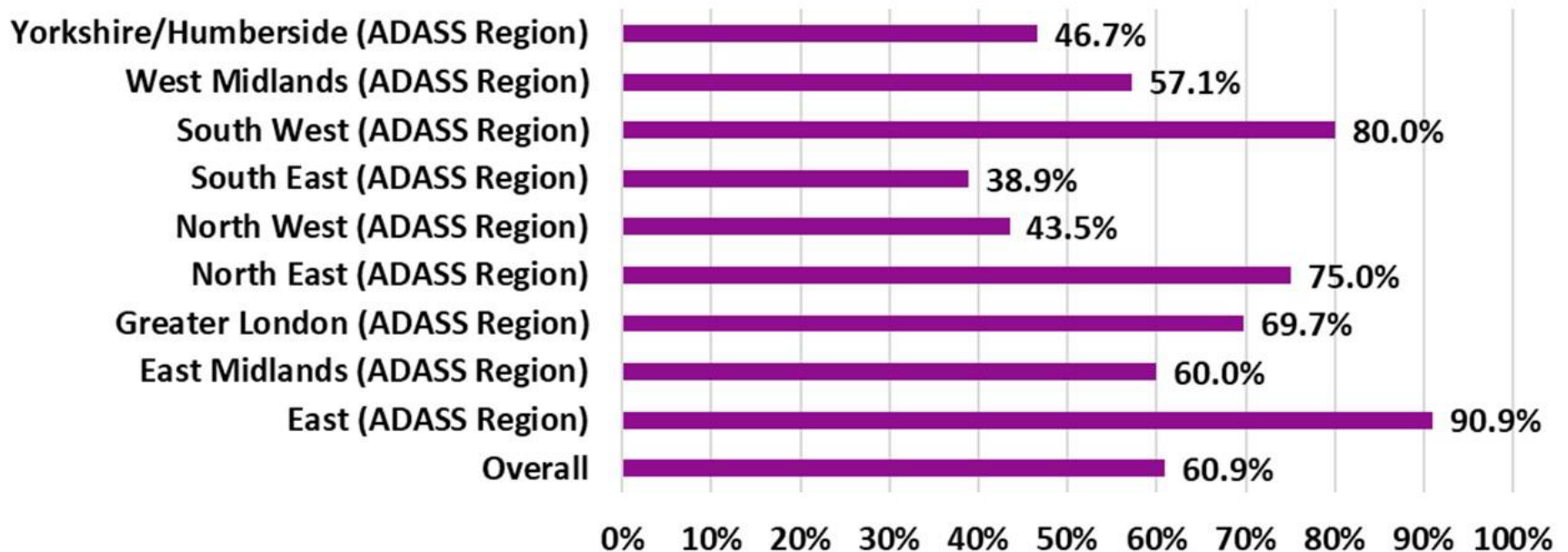
- 
- Aim** to describe safeguarding adults' activity during the COVID-19 pandemic
- How** request local insight and data on safeguarding activity on a voluntary basis
- Why** we didn't know, lots of concerns, wanted to learn lessons
- Drivers** Safeguarding Adults Board chairs and managers; delays in NHS Digital data collection

Methodology: voluntary data collection; safeguarding activity monthly January 2019 – June 2020 to compare 2019 and 2020; subset of the Safeguarding Adults Collection by NHS Digital; using an Excel template; collated through LG Inform; plus insight comments

Caveats: local circumstances, variations in COVID and responses, unvalidated data, changes in practice between 2019/20 and 2020/21

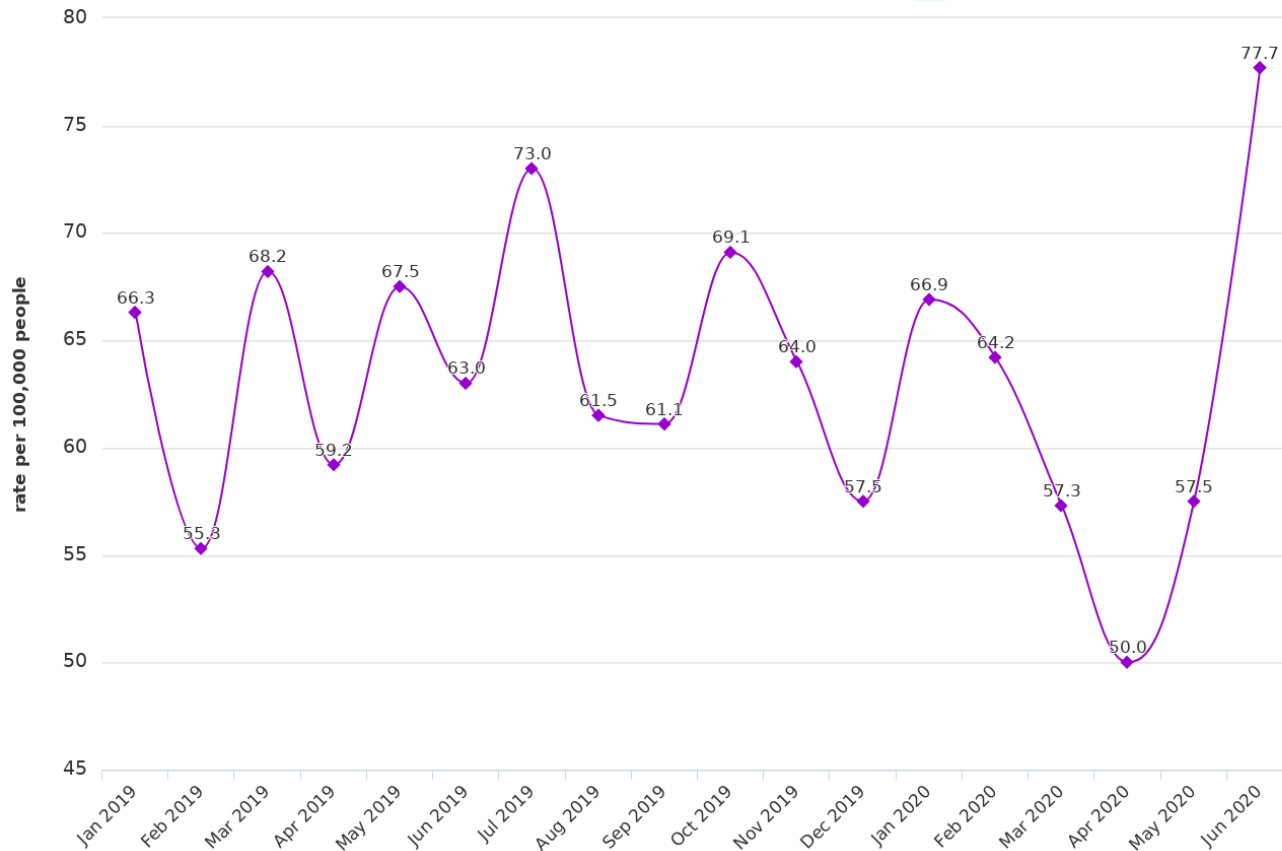
Response rate

- 92 councils: over 60% of applicable English councils
- 58 gave additional textual information
- 45 included qualitative insights (remainder gave comments clarifying the data)



Part 1: Safeguarding concerns

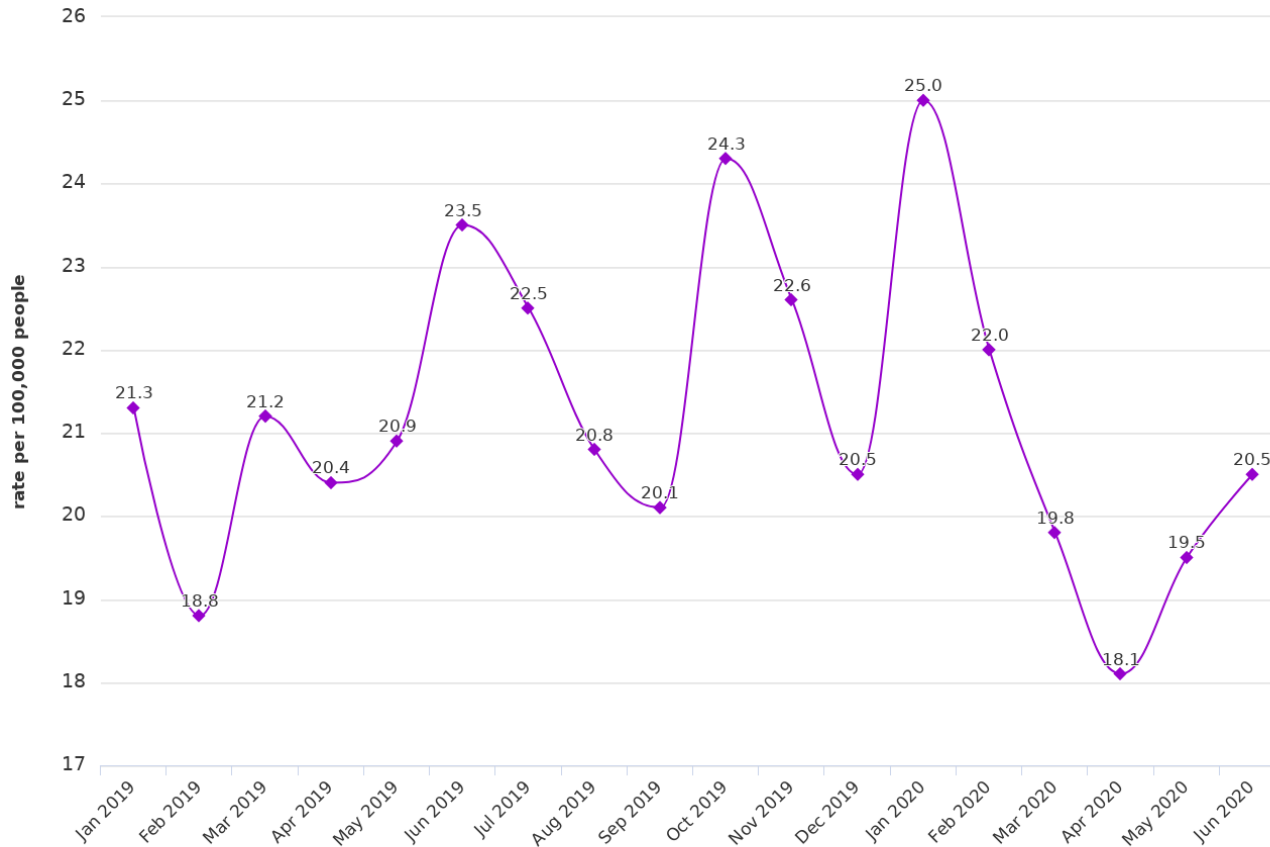
Overall: dropped initially during lockdown (March-May), “bounced back” and exceeded normal levels by June



Powered by LG Inform

Part 2: Section 42 safeguarding enquiries

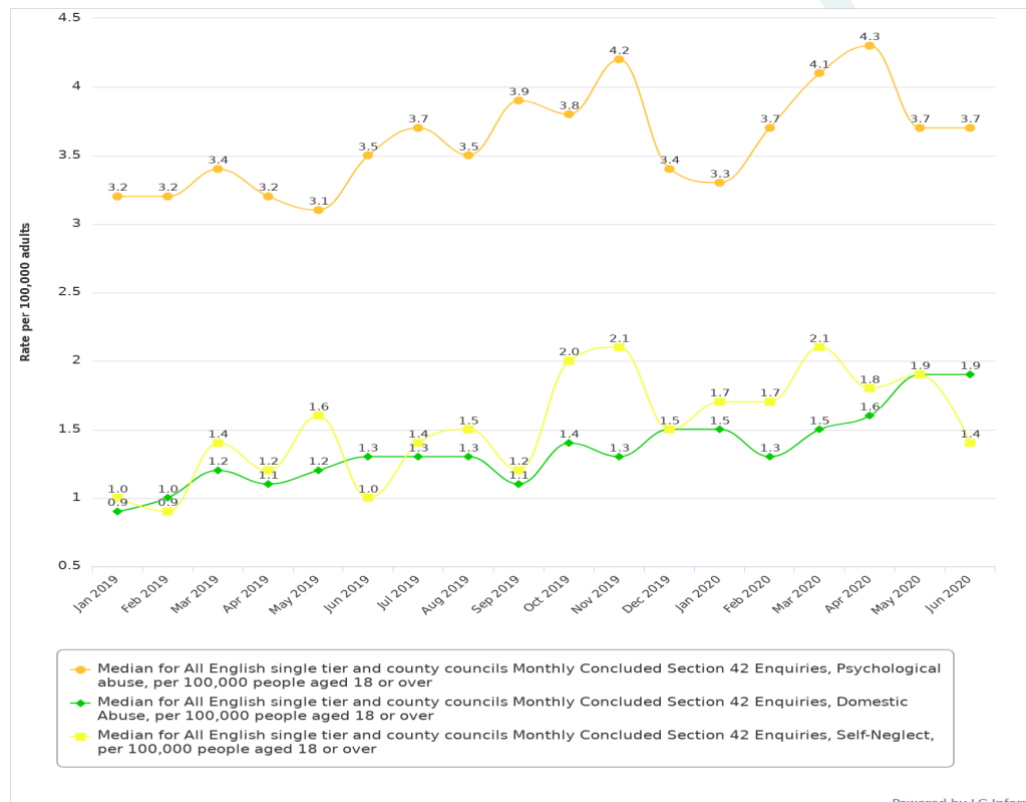
Overall: similar to concerns, decline during March-May then upturn in June; upturn was not large



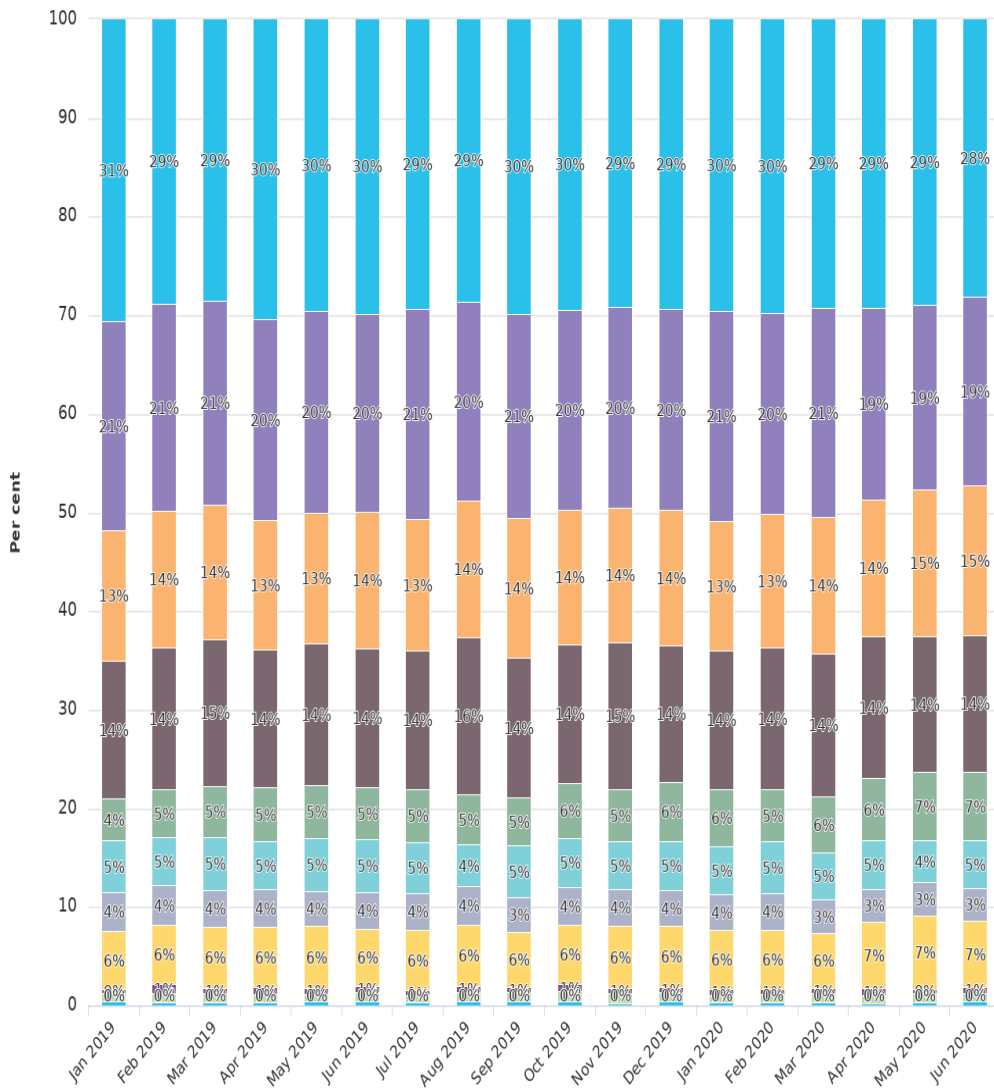
Powered by LG Inform

Part 4: Type of abuse

- No large-scale changes in relative frequency of abuse types overall;
- Some (**psychological**, **self-neglect**, **domestic**) were slightly higher overall during lockdown



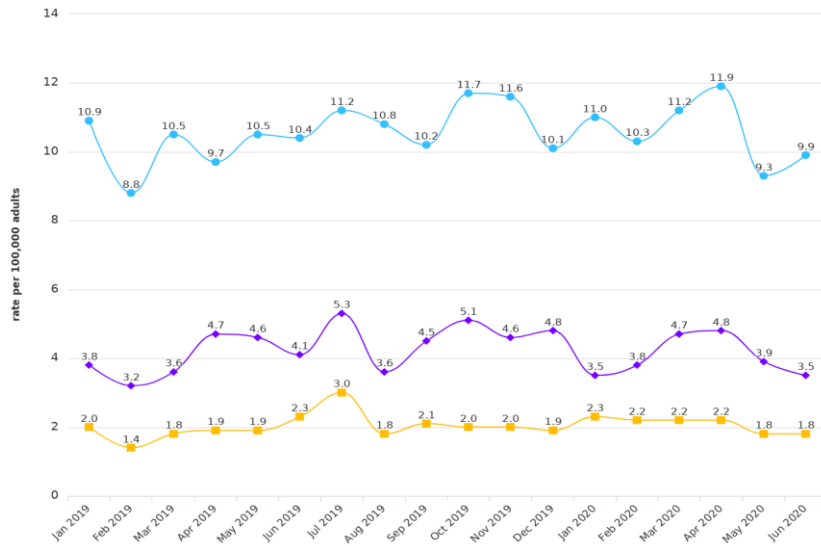
Powered by LG Inform



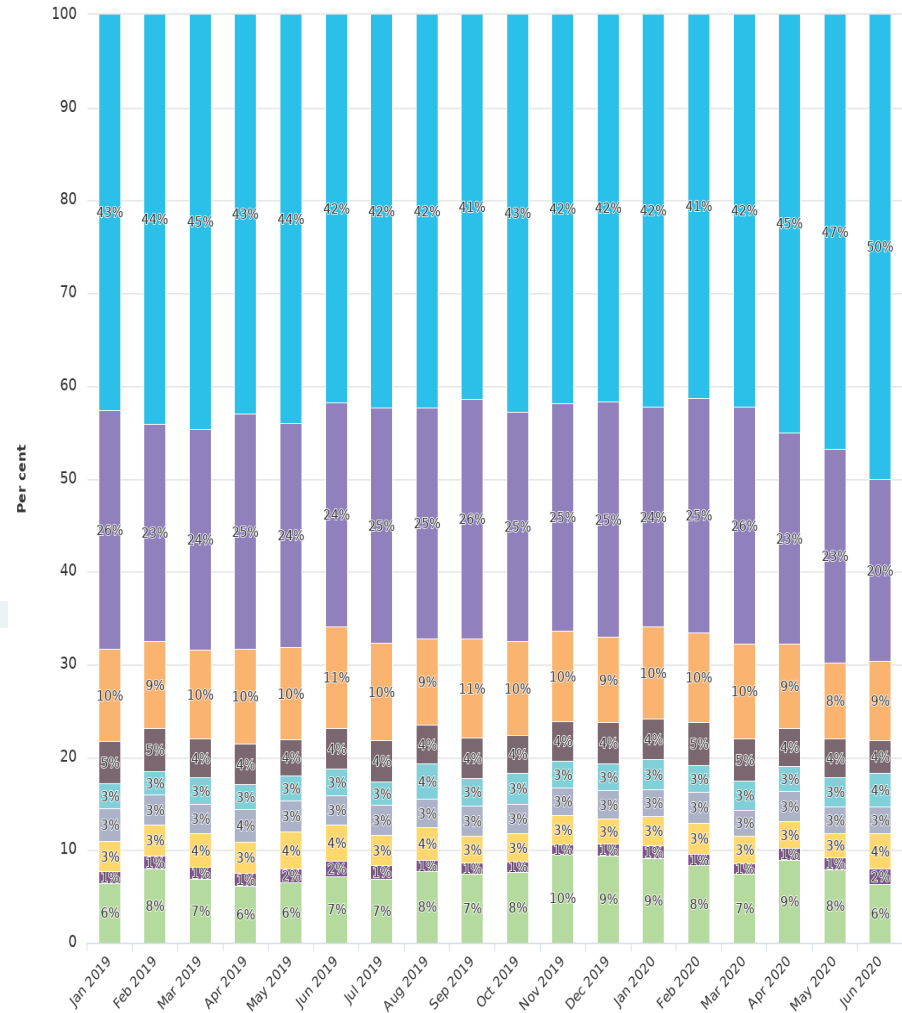
- Total for All English single tier and county councils Concluded Section 42 Enquiries, Neglect or Acts of Omission, COVID-19 voluntary project
- Total for All English single tier and county councils Concluded Section 42 Enquiries, Physical Abuse, COVID-19 voluntary project
- Total for All English single tier and county councils Concluded Section 42 Enquiries, Psychological Abuse, COVID-19 voluntary project
- Total for All English single tier and county councils Concluded Section 42 Enquiries, Financial or Material Abuse, COVID-19 voluntary project
- Total for All English single tier and county councils Concluded Section 42 Enquiries, Domestic Abuse, COVID-19 voluntary project
- Total for All English single tier and county councils Concluded Section 42 Enquiries, Organisational Abuse, COVID-19 voluntary project
- Total for All English single tier and county councils Concluded Section 42 Enquiries, Sexual Abuse, COVID-19 voluntary project
- Total for All English single tier and county councils Concluded Section 42 Enquiries, Self-Neglect, COVID-19 voluntary project
- Total for All English single tier and county councils Concluded Section 42 Enquiries, Discriminatory Abuse, COVID-19 voluntary project
- Total for All English single tier and county councils Concluded Section 42 Enquiries, Sexual Exploitation, COVID-19 voluntary project
- Total for All English single tier and county councils Concluded Section 42 Enquiries, Modern Slavery, COVID-19 voluntary project

Part 5: Location of abuse

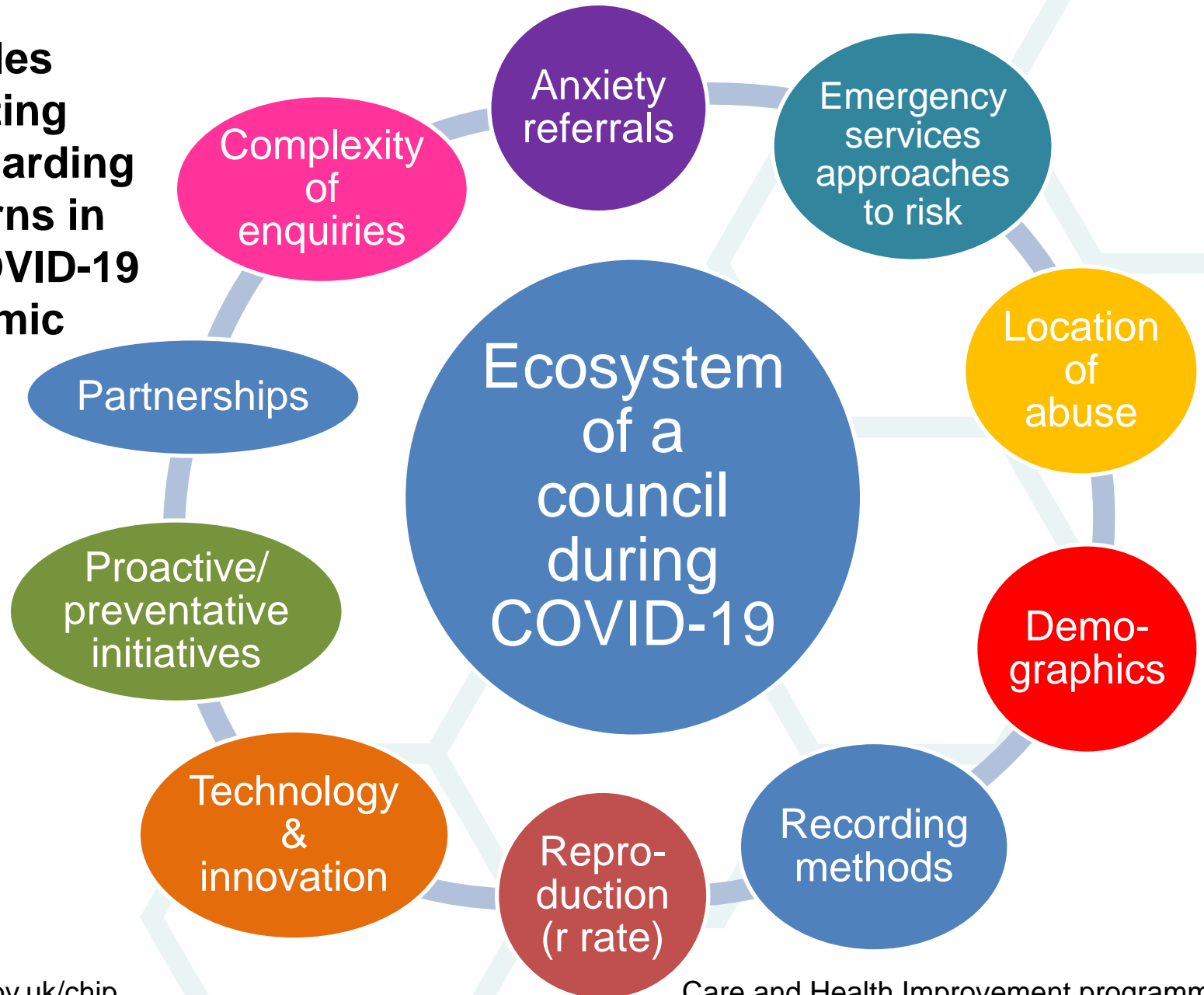
- Substantial increase in relative frequency of abuse in individual's own home
- Matching decrease in frequency of care home (residential and nursing) based enquiries



● Median for All English single tier and county councils Monthly Concluded Section 42 Enquiries, risk located in individual's own home, per 100,000 people aged 18 and over
● Median for All English single tier and county councils Monthly Concluded Section 42 Enquiries, risk located in a residential care home, per 100,000 people aged 18 and over
● Median for All English single tier and county councils Monthly Concluded Section 42 Enquiries, risk located in a nursing care home, per 100,000 people aged 18 and over



Variables impacting safeguarding concerns in the COVID-19 pandemic



Next steps

- Send out reports to all participants showing data at local vs regional and national levels
- Offer regional comparative data on request and by agreement with participants
- Circulate pro forma with new qualitative questions to request voluntary returns for period July-December 2020 (return date 31 January 2021)
- Aiming to produce a second report 2021